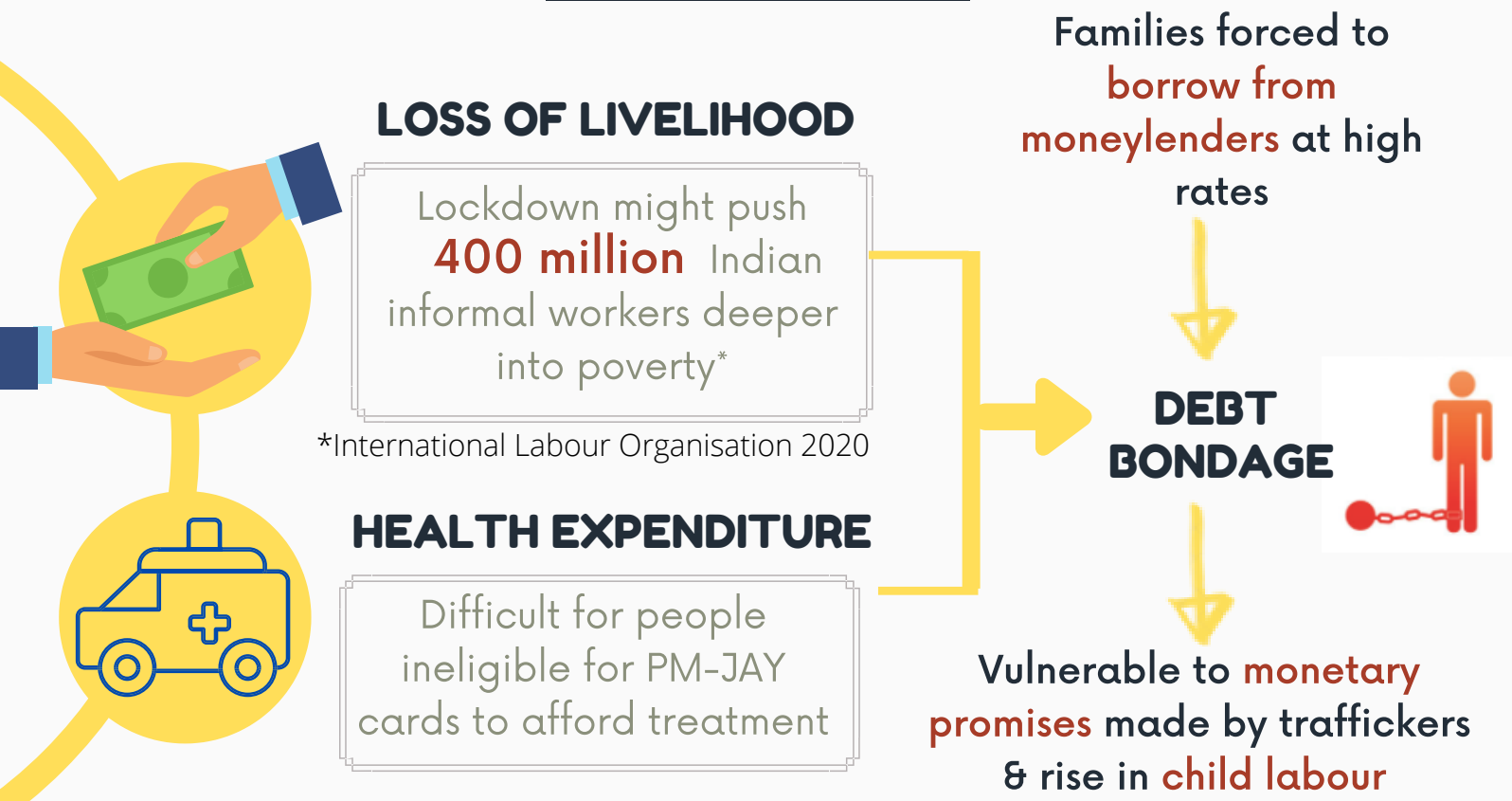




# COVID-19: THE RISE IN HUMAN TRAFFICKING

Arising from COVID-19, following factors have led to an increase in the vulnerability of communities to different forms of human trafficking

## FINANCIAL STRAIN



## INCREASE IN DEMAND FOR CHEAP LABOUR



## ONLINE SEXUAL ABUSE



Consumption of child pornography increased by **95%** between **March 24 & 26**.\*

\*India Child Protection Fund (ICPF)

## SHUTDOWN OF SCHOOLS

- Lack of safety net** for vulnerable children against trafficking
- Fully reliant on **caregivers** who are **stressed** especially due to financial strains.
- With no escape, children **more vulnerable to exploitation**

Over **91%** of the world's student population has been affected by the coronavirus pandemic\*.

In India, more than **32 crore** students have been affected by restrictions & the lockdown\*.

\*COVID-19 Impact on Education Report 2020 (UNESCO)

# UNAVAILABILITY OF PROTECTION SERVICES

Functioning of protection systems that can prevent trafficking compromised



Services such as shelter homes are closed or under-resourced

Child-protection organisations unable to conduct home visits in areas with stay-at-home orders.



## RECOMMENDATIONS

Assessment & Review of LEGAL FRAMEWORK to counter crime & meet victim needs\*.



Strengthening STATE-CIVIL SOCIETY COLLABORATION for relief to marginalised communities.

Increased BUDGETARY ALLOCATION for law enforcement & victim rehabilitation\*



RESOURCES for organisations & frontline operators in protection services.

INSPECTIONS of factories, REGULATION of loan & moneylending systems\*.



PRO-ACTIVE TASK FORCES for detection of cyber cases.

Safety net in source areas of trafficking through INTENSIVE CAMPAIGNS.

